

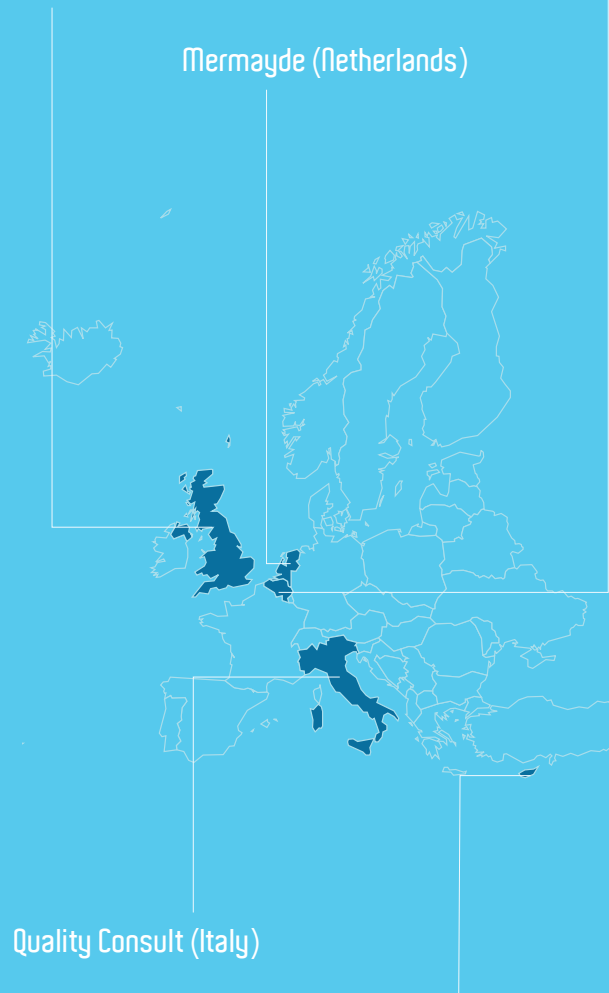
Hydroscan (Belgium)

Katholieke Universiteit Leuven (Belgium)

UZW WISE RTD (Belgium)

Hydro International (United Kingdom)

Mermayde (Netherlands)



Quality Consult (Italy)

XPRO Consulting (Cyprus)

Funding:

This project is implemented through the European Commission's Seventh Framework Programme (FP7). Theme: Dissemination and Uptake of FP Environmental Research Results with Tangible Impact on Economic Growth and Social Welfare

Time Frame:

January 2011 – December 2012

Contacts:

Guido Vaes (Project Coordinator)
HydroScan
Diestsesteenweg 104 A, BE-3010 Kessel-lo, Belgium
e-mail: guido.vaes@hydroscan.be

Kees Kramer (Scientific Officer)
Mermayde
P.O. Box 109, 1860 AC Bergen, Netherlands
e-mail: kees.kramer@mermayde.nl

Xenia Schneider (Communication & Dissemination)
XPRO Consulting
7 Nelson Street, CY-2021, Strovolos, Cyprus
e-mail : xenia-schneider@xpro-consulting.com

Project Website:

www.spi-water.eu/step-wise

WISE-RTD Website:



www.wise-rtd.info

Join us through LinkedIn, Twitter and Facebook at:

Twitter : @SPIWater

LinkedIn : <http://www.linkedin.com/in/spiwater>

Facebook : Spi-Water



step-wise

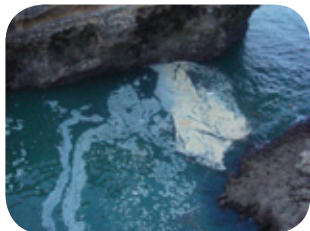
Science,
Technology and Policy
Interfacing
using WISE-RTD



Project Summary

Environmental protection and sustainability, including water resources, is of pivotal importance to everyone. The European Community has spent millions of Euros funding Research and Technological Development (RTD) for decades aiming at protecting and managing the environment. Likewise, many resources are spent in defining and implementing e.g. water related policies such as the Water Framework, Floods, Marine Strategy Framework, Groundwater, Drinking Water and Urban Waste Water Directives. Despite all good intentions and efforts, there remains a communication gap between policy, research and industry. Research results are not fully exploited. There are still many challenges to be faced such as water-body protection, water pollution, floods and droughts.

The STEP-WISE project aims to facilitate bridging this gap through the WISE-RTD Knowledge Portal, freely accessible on the internet. WISE-RTD, focusing on 'water' links RTD-results to EU-policies and to (industrial) end-users. WISE-RTD facilitates dissemination of RTD results to scientists and non-scientific stakeholders (policy, industrial sector; from SMEs to larger industries) to find RTD results. Likewise, scientists and industry may identify policy-research gaps for future research and exploitation.



Coastal water pollution



Pristine mountain streams

Project Content and Expected Results

The STEP-WISE Project has one main aim to promote the use of EU environmental research results in European, national and international policies for supporting environmental protection, economic growth and social welfare.

The project's focus is the Water sector with these goals:

1. Expand the current WISE-RTD Knowledge Portal to include all EU water related directives and the US Clean Water Act. Through an intelligent keyword network, policy objectives research results and water technologies will be inter-linked.
2. Upload information on EU funded research (FP and LIFE projects and results) in the WISE-RTD Knowledge Portal; summaries in plain English are provided. RTD-results will be linked to relevant water policies.
3. Extend WISE-RTD Knowledge Portal with an "e-market" functionality matching technology offers and needs leading to a bottom-up approach for implementing water related policies. This will allow identification of gaps between policy domains and available technologies.
4. Use the WISE-RTD Knowledge Portal to evaluate whether policy questions have been answered by the RTD outcomes (top down, scientific support to policy), and whether needs from identified stakeholders are covered by policy issues (bottom-up).
5. Improve the communication between policy-makers and implementers, scientists and industry through a free-of-charge e-Learning programme. Different stakeholders may interact simultaneously in three perspectives (policy, research and application) by using the WISE-RTD Knowledge Portal.

Policy–Science–Industry Improved Communication for Water

- 💧 What's in it for me?
- 💧 How does it affect my decisions?

The pressures to ensure water quality, sufficient quantity and its sustainable use are multiple. The effects on environmental protection, economic growth and social welfare are crucial. Communication gaps between policy, science and industrial application impair efficient uptake of RTD results and may have a negative impact on water policy decisions.

Follow the STEP-WISE project and get involved in WISE-RTD. You will have free access to a wealth of knowledge for better decision-making. Disseminate your RTD-results to end-users: scientists, policy and industrial end-users.

 @SPIWater

 www.linkedin.com/in/spiwater

 Spi-Water